



www.vanamaticpi.com



701 Ambrose Drive
Delphos, OH 45833

(p) 419-692-6085

(f) 419-692-3260



2018

Specifications & Pricing Guide

*"The One Stop Shop for Custom
Precision Industrial Fittings"*

*Available In
Aluminum
Stainless Steel
Carbon Steel*



Need a Custom Product Solutions?

VANAMATIC Custom Solutions



Precision Industrial Fittings



2018 Specifications & Pricing Guide

December 20, 2017

Dear Valued Customer:

The attached sales brochure includes specifications and pricing for Precision Industrial Fittings offered by Vanamatic Company. For those of you who have placed orders in the past; first, thank you for your business; second, pricing to start 2018 will once again remain the same since our 2013 pricing.

Check our website: <http://www.vanamaticpi.com> for updates and new product offerings.

We appreciate your business and are here to help in any way we can. Listed below are the contact names and email addresses for the appropriate personnel.

Sales: Steve K. Schroeder, steves@vanamatic.com

Customer Service: Judy Spieles, judys@vanamatic.com

Accounts Receivables: Sandy Schoonover, sandys@vanamatic.com

The specifications and pricing are also available online at <http://www.vanamaticpi.com>.

Phone: 419-692-6085

Fax: 419-692-3260

Thank you for your continued business. If you have any questions, please do not hesitate to call.

Sincerely,

A handwritten signature in black ink, appearing to read 'Steve K. Schroeder', written in a cursive style.

Steve K. Schroeder
Director of Marketing and Sales

2018 Specifications & Pricing Guide

General Specifications4

 Barb Specifications5

 1000 Series Band Type Hose Mender Coupling Nipple5

 2000 Series Band Type Thin Wall Male Nipple6

 4000 Series Heavy Duty Thick Wall Male Nipple7

 5000 Series Heavy Duty Thick Wall Female Nipple8

 6000 Series Heavy Duty Thick Wall Male Heat Treated Nipple9

 Malleable Clamps10

 Hy-Way Quick Acting Couplings11

Terms and Conditions of Sale Policy 12

2017 Pricing Schedule

 1000 Series Band Type Hose Mender Coupling Nipple (Steel) 13

 1000 Series Band Type Hose Mender Coupling Nipple (Aluminum) 14

 1000 Series Band Type Hose Mender Coupling Nipple (304 SS) 15

 1000 Series Band Type Hose Mender Coupling Nipple (316 SS) 16

 2000 Series Band Type Thin Wall Male Nipple (Steel) 17

 2000 Series Band Type Thin Wall Male Nipple (Aluminum) 18

 2000 Series Band Type Thin Wall Male Nipple (304 SS) 19

 2000 Series Band Type Thin Wall Male Nipple (316SS) 20

 4000 Series Heavy Duty Thick Wall Male Nipple (Steel) 21

 4000 Series Heavy Duty Thick Wall Male Nipple (Aluminum) 22

 4000 Series Heavy Duty Thick Wall Male Nipple (304 SS) 23

 4000 Series Heavy Duty Thick Wall Male Nipple (316 SS) 24

 5000 Series Heavy Duty Thick Wall Female Nipple (Steel) 25

 5000 Series Heavy Duty Thick Wall Female Nipple (Aluminum) 26

 5000 Series Heavy Duty Thick Wall Female Nipple (304 SS) 27

 5000 Series Heavy Duty Thick Wall Female Nipple (316 SS) 28

 6000 Series Heavy Duty Thick Wall Male Heat Treated Nipple (Steel) 29

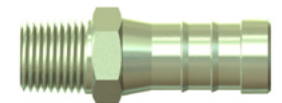
 Malleable Clamps and Hy-Way Couplings 30

2018 Specifications & Pricing Guide

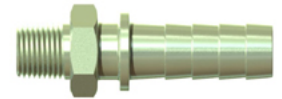
Push-On Barb Coupling



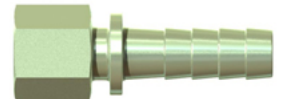
Push-On Barb x Male NPT



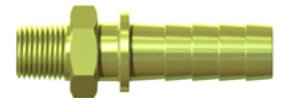
Thick Wall Barb x Male NPT



Thick Wall Barb x Female NPT



Thick Wall Barb x Male NPT (Heat Treated)



Twist Jaw Hose Coupling



Interlocking Hose Clamp



 VANAMATIC Company

701 Ambrose Drive

Delphos, OH 45833

PH: 419-692-6085

Fax: 419-692-3260

Web: <http://www.vanamaticpi.com>



Need a Custom Product Solution?
 VANAMATIC Custom Solutions

2018 Specifications & Pricing Guide

General Specifications

Dimensions to ANSI 16.3 Pressure to ANSI 16.5 Class 150LB

Standard Steel Material Specification – C1215 and C12L14 - ASTM A108, ASTM A29

Standard Stainless Steel Material Specification – Type 304 and Type 316 - ASTM A276

Standard Aluminum Material Specifications – Type 2024-T351 – ASTM-B211

Steel Parts – Bright Trivalent Plated ♦ ROHS Compliant

ASTM B633 Service Condition I, Type II - (Yellow) Type III – (Clear)

Stainless Steel Parts – (Clean and Dry, No Passivation or Electropolish) ♦ ROHS Compliant

Aluminum Fittings – Clear Conventional Type II Sulfuric Anodize – Colors Available ♦ ROHS Compliant

Fittings for use with Air, Water, and Oil

Twist Jaw Hose Coupling for use with Air and Water. *(Do not use in Steam applications)*

Hose Type: Rubber and Plastic – (See hose manufacturer specifications for compatibility)

Clamps: Use band, worm-drive, or malleable bolt clamps

Maximum Pressure: Fittings - 150PSI @72°F

Twist Jaw Couplings – 110PSI @72°F - Maximum Temperature: 110°F

Hose to Pipe Temperature Range: -40°F to +350°F (See hose mfg. specifications)

Hose to Hose Temperature Range: Not Rated

Hose to Pipe Vacuum Range: 29” Hg @ 72°F (See hose mfg. specifications)

Hose to Hose Vacuum Range: Not Rated

Acceptance. Vanamatic Company (“Seller”) agrees to sell materials, products, and/or any other item (“Goods”) to the customer (“Buyer”) based on the terms and conditions herein described. The pricing for the Goods are based on these terms and only applicable to these terms unless otherwise specified.

Title and Risk of Loss. Prices quoted are F.O.B. Seller’s facility unless otherwise agreed upon and specified in the Seller’s quotation. Title and risk of loss or damage to the Goods shall pass to the Buyer as soon as the finished Goods leave the control of the Seller. Seller shall have a security interest in the Goods until full payment has been made by the Buyer.

Warranty: These specifications are guidelines for general use of Vanamatic Company “Seller” goods contained herein. There are no warranties whatsoever for end users design, assembly, and/or application of Seller’s goods.

Liability: Seller recommends limitations for the use of Seller’s goods. Purchasers of Seller’s goods are solely responsible and shall use due diligence for the design, assembly, and/or application of Seller’s goods.

Indemnity: Purchaser shall indemnify and save harmless and defend Seller, its subsidiaries, division and affiliates, and their directors, officers, employees and agents from and against any and all claims, demands, actions, causes of action, losses, damages, liability and costs (including reasonable attorney’s fees, taxes, penalties and interest (collectively “Claims”), of any nature whatsoever, for loss of or damage to property (whether same be that of third persons or of either of the parties hereto) and for injury to or death of persons (whether they be third persons or employees of Buyer, any subcontractor or material men) in any manner arising out of incident to the sale and delivery of goods, except for loss, damage or injury caused solely by an act of negligence by Seller.

Distributors/Resellers: shall make Seller’s Specifications available to third party purchasers of Seller’s products.

2018 Specifications & Pricing Guide

Barb Specifications

Hose Description	Standard Barb to Male Pipe And Barb to Barb			Thick Wall Barb to Male Pipe and Female Pipe		
	Barbs	ID	Wall	Barbs	ID	Wall
1/4" hose	3	.16"	.03"	4	.16"	.045"
5/16" hose	3	.22"	.03"	4	.19"	.075"
3/8" hose	3	.25"	.045"	4	.22"	.075"
1/2" hose	3	.38"	.045"	4	.31"	.095"
5/8" hose	3	.50"	.045"	4	.40"	.112"
3/4" hose	3	.56"	.08"	4	.50"	.125"
1" hose to 3/4" Pipe	3	.69"	.14"	4	.69"	.155"
1" hose (All Other)	3	.75"	.11"	4	.75"	.125"
1-1/4" hose	3	.94"	.14"			
1-1/2" hose	3	1.25"	.11"			

1000 Series Band Type Hose Mender Coupling Nipples

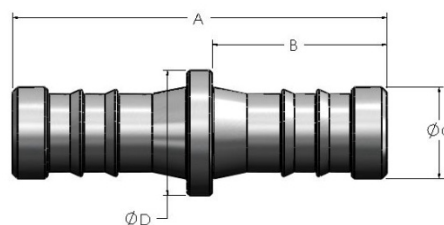
Steel - Aluminum - Stainless Steel

Economy High Flow

Shanks designed to be used with band clamps

Large bores for maximum flow rates

C12L14 Steel, 2024-T351 Alum, 304 or 316 SS



General Specifications Description	Part Number Series	Dimensions					
		Length (A)	Length (B)	Dia. (C)	Dia. (D)	Stock Size	Bore Size
1/4" hose to 1/4" hose	111x	2-1/4"	1.050	.300	.500	1/2" Rd	.16"
5/16" hose to 5/16" hose	122x	2-1/4"	1.050	.362	.500	1/2" Rd	.22"
3/8" hose to 3/8" hose	133x	2-1/4"	1.050	.425	.625	5/8" Rd	.25"
1/2" hose to 1/2" hose	144x	2-1/4"	1.050	.550	.750	3/4" Rd	.38"
5/8" hose to 5/8" hose	155x	3-3/8"	1.550	.675	.875	7/8" Rd	.50"
3/4" hose to 3/4" hose	166x	3-3/8"	1.550	.800	1.000	1" Rd	.56"
1" hose to 1" hose	177x	3-3/8"	1.550	1.050	1.250	1-1/4" Rd	.75"
1-1/4" hose to 1-1/4" hose	188x	3-3/8"	1.550	1.300	1.500	1-1/2" Rd	.94"
1-1/2" hose to 1-1/2" hose	199x	3-3/8"	1.550	1.550	1.750	1-3/4" Rd	1.25"

2000 Series Band Type Nipples

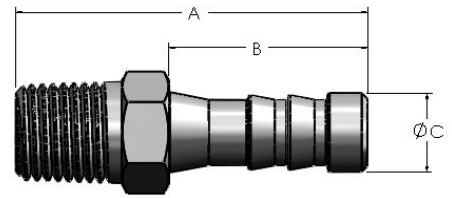
Steel - Aluminum - Stainless Steel

Economy High Flow

Shanks designed to be used with band clamps

Large bores for maximum flow rates

C12L14 Steel, 2024-T351 Alum, 304 or 316 SS



<u>General Specifications</u> Description	Part Number Series	Dimensions					Stock Size	Bore Size
		Length (A)	Length (B)	Dia. (C)				
1/4" hose to 1/8" Male NPT	212x	1-11/16"	1.050	.30			9/16" H	.16"
1/4" hose to 1/4" Male NPT	213x	1-7/8"	1.050	.30			9/16" H	.16"
1/4" hose to 3/8" Male NPT	214x	1-7/8"	1.050	.30			11/16" H	.16"
1/4" hose to 1/2" Male NPT	215x	2-1/8"	1.050	.30			7/8" H	.16"
5/16" hose to 1/4" Male NPT	223x	1-7/8"	1.050	.362			9/16" H	.22"
5/16" hose to 3/8" Male NPT	224x	1-7/8"	1.050	.362			11/16" H	.22"
5/16" hose to 1/2" Male NPT	225x	2-1/8"	1.050	.362			7/8" H	.22"
3/8" hose to 1/8" Male NPT	232x	1-11/16"	1.050	.425			9/16" H	.25"
3/8" hose to 1/4" Male NPT	233x	1-7/8"	1.050	.425			9/16" H	.25"
3/8" hose to 3/8" Male NPT	234x	1-7/8"	1.050	.425			11/16" H	.25"
3/8" hose to 1/2" Male NPT	235x	2-1/8"	1.050	.425			7/8" H	.25"
1/2" hose to 1/4" Male NPT	243x	1-7/8"	1.050	.550			9/16" H	.38"
1/2" hose to 3/8" Male NPT	244x	1-7/8"	1.050	.550			11/16" H	.38"
1/2" hose to 1/2" Male NPT	245x	2-1/8"	1.050	.550			7/8" H	.38"
1/2" hose to 3/4" Male NPT	246x	2-3/16"	1.050	.550			1 1/8" H	.38"
5/8" hose to 1/2" Male NPT	255x	2-5/8"	1.550	.675			7/8" H	.50"
5/8" hose to 3/4" Male NPT	256x	2-11/16"	1.550	.675			1-1/8" H	.50"
3/4" hose to 1/2" Male NPT	265x	2-5/8"	1.550	.800			7/8" H	.56"
3/4" hose to 3/4" Male NPT	266x	2-11/16"	1.550	.800			1 1/8" H	.56"
3/4" hose to 1" Male NPT	267x	2-15/16"	1.550	.800			1-3/8" H	.56"
1" hose to 3/4" Male NPT	276x	2-11/16"	1.550	1.050			1 1/8" H	.69"
1" hose to 1" Male NPT	277x	2-15/16"	1.550	1.050			1 3/8" H	.75"
1-1/4" hose to 1" Male NPT	287x	2-15/16"	1.550	1.300			1 3/8" H	.94"
1-1/4" hose to 1-1/4" Male NPT	288x	2-15/16"	1.550	1.300			1 3/4" H	.94"
1-1/2" hose to 1-1/2" Male NPT	299x	2-15/16"	1.550	1.550			1 7/8" H	1.25"

4000 Series Heavy Duty Nipples

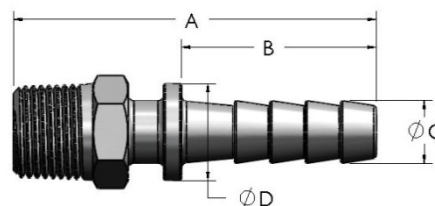
Steel - Aluminum - Stainless Steel

Robust design with heavy duty cross section

Shanks deeply barbed to grip hose firmly

Locking groove for malleable clamps

C12L14 Steel, 2024-T351 Alum, 304 or 316 SS



<u>General Specifications</u> Description	Part Number Series	Dimensions					
		Length (A)	Length (B)	Dia. (C)	Dia. (D)	Stock Size	Bore Size
1/4" hose to 1/8" Male NPT	412x	2-1/16"	1.130	.312	.550	9/16" H	.16"
1/4" hose to 1/4" Male NPT	413x	2-1/4"	1.130	.312	.550	9/16" H	.16"
1/4" hose to 3/8" Male NPT	414x	2-1/4"	1.130	.312	.550	11/16" H	.16"
1/4" hose to 3/8" Male NPT	415x	2-7/16"	1.130	.312	.550	7/8" H	.16"
5/16" hose to 1/4" Male NPT	423x	2-1/4"	1.130	.375	.610	9/16" H	.19"
5/16" hose to 3/8" Male NPT	424x	2-1/4"	1.130	.375	.610	11/16" H	.19"
5/16" hose to 1/2" Male NPT	425x	2-7/16"	1.130	.375	.610	7/8" H	.19"
3/8" hose to 1/8" Male NPT	432x	2-3/8"	1.380	.437	.680	11/16" H	.22"
3/8" hose to 1/4" Male NPT	433x	2-9/16"	1.380	.437	.680	11/16" H	.22"
3/8" hose to 3/8" Male NPT	434x	2-9/16"	1.380	.437	.680	11/16" H	.22"
3/8" hose to 1/2" Male NPT	435x	2-13/16"	1.380	.437	.680	7/8" H	.22"
1/2" hose to 1/4" Male NPT	443x	2-3/4"	1.560	.562	.870	7/8" H	.31"
1/2" hose to 3/8" Male NPT	444x	2-3/4"	1.560	.562	.870	7/8" H	.31"
1/2" hose to 1/2" Male NPT	445x	3"	1.560	.562	.870	7/8" H	.31"
1/2" hose to 3/4" Male NPT	446x	3-1/16"	1.560	.562	.870	1 1/8" H	.31"
5/8" hose to 1/2" Male NPT	455x	3"	1.560	.687	1.095	1-1/8" H	.40"
5/8" hose to 3/4" Male NPT	456x	3-1/16"	1.560	.687	1.095	1-1/8" H	.40"
3/4" hose to 1/2" Male NPT	465x	3-9/16"	2.000	.812	1.120	1-1/8" H	.50"
3/4" hose to 3/4" Male NPT	466x	3-9/16"	2.000	.812	1.120	1 1/8" H	.50"
3/4" hose to 1" Male NPT	467x	3-13/16"	2.000	.812	1.120	1 3/8" H	.50"
1" hose to 3/4" Male NPT	476x	3-9/16"	2.000	1.062	1.370	1 3/8" H	.69"
1" hose to 1" Male NPT	477x	3-13/16"	2.000	1.062	1.370	1 3/8" H	.75"

5000 Series Heavy Duty Nipples

Steel - Aluminum - Stainless Steel

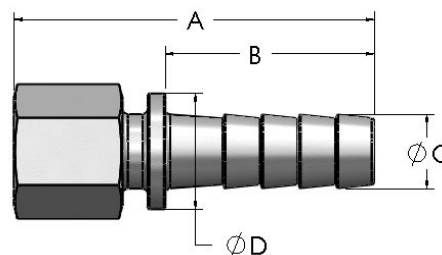
Female pipe threads

Robust design with heavy duty cross section

Shanks deeply barbed to grip hose firmly

Locking groove for malleable clamps

C12L14 Steel, 2024-T351 Alum, 304 or 316 SS

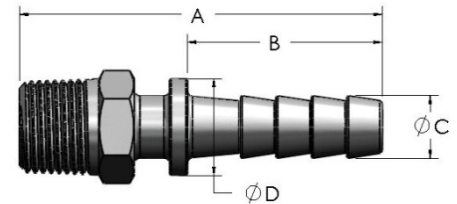


General Specifications Description	Part	Dimensions					
	Number	Length	Length	Dia.	Dia.	Stock	Bore
	Series	(A)	(B)	(C)	(D)	Size	Size
1/4" hose to 1/8" Female NPT	512x	2 3/16"	1.130	.312	.550	9/16" H	.16"
1/4" hose to 1/4" Female NPT	513x	2 3/16"	1.130	.312	.550	11/16" H	.16"
1/4" hose to 3/8" Female NPT	514x	2 1/4"	1.130	.312	.550	7/8" H	.16"
1/4" hose to 1/2" Female NPT	515x	2 7/16"	1.130	.312	.550	1 1/8" H	.16"
5/16" hose to 1/4" Female NPT	523x	2 3/16"	1.130	.375	.610	11/16" H	.19"
5/16" hose to 3/8" Female NPT	524x	2 1/4"	1.130	.375	.610	7/8" H	.19"
5/16" hose to 1/2" Female NPT	525x	2 7/16"	1.130	.375	.610	1 1/8" H	.19"
3/8" hose to 1/8" Female NPT	532x	2 1/2"	1.380	.437	.680	11/16" H	.22"
3/8" hose to 1/4" Female NPT	533x	2 1/2"	1.380	.437	.680	11/16" H	.22"
3/8" hose to 3/8" Female NPT	534x	2 9/16"	1.380	.437	.680	7/8" H	.22"
3/8" hose to 1/2" Female NPT	535x	2 3/4"	1.380	.437	.680	1 1/8" H	.22"
1/2" hose to 1/4" Female NPT	543x	2 11/16"	1.560	.562	.870	7/8" H	.31"
1/2" hose to 3/8" Female NPT	544x	2 3/4"	1.560	.562	.870	7/8" H	.31"
1/2" hose to 1/2" Female NPT	545x	2 15/16"	1.560	.562	.870	1 1/8" H	.31"
1/2" hose to 3/4" Female NPT	546x	3 1/16"	1.560	.562	.870	1 3/8" H	.31"
5/8" hose to 1/2" Female NPT	555x	2 15/16"	1.560	.687	1.095	1-1/8" H	.40"
5/8" hose to 3/4" Female NPT	556x	3 1/16"	1.560	.687	1.095	1-3/8" H	.40"
3/4" hose to 1/2" Female NPT	565x	3 7/16"	2.000	.812	1.120	1-1/8" H	.50"
3/4" hose to 3/4" Female NPT	566x	3 9/16"	2.000	.812	1.120	1 3/8" H	.50"
3/4" hose to 1" Female NPT	567x	3 7/8"	2.000	.812	1.120	1 3/4" H	.50"
1" hose to 3/4" Female NPT	576x	3 9/16"	2.000	1.062	1.370	1 3/8" H	.69"
1" hose to 1" Female NPT	577x	3 7/8"	2.000	1.062	1.370	1 3/4" H	.75"

6000 Series Heavy Duty Heat Treated Nipples

Carbon Steel

Case hardened for sand blast applications
 Robust design with heavy duty cross section
 Shanks deeply barbed to grip hose firmly
 Locking groove for malleable clamps
 Yellow Trivalent Plated ♦ ROHS Compliant
 C12L14 Steel



<u>General Specifications</u> Description	Part Number Series	Dimensions					
		Length (A)	Length (B)	Dia. (C)	Dia. (D)	Stock Size	Bore Size
3/8" hose to 1/4" Male NPT	6330	2-9/16"	1.380	.437	.680	11/16" H	.22"
3/8" hose to 3/8" Male NPT	6340	2-9/16"	1.380	.437	.680	11/16" H	.22"
3/8" hose to 1/2" Male NPT	6350	2-13/16"	1.380	.437	.680	7/8" H	.22"
1/2" hose to 3/8" Male NPT	6440	2-3/4"	1.560	.562	.870	7/8" H	.31"
1/2" hose to 1/2" Male NPT	6450	3"	1.560	.562	.870	7/8" H	.31"
3/4" hose to 1/2" Male NPT	6650	3-9/16"	2.000	.812	1.120	1-1/8" H	.50"
3/4" hose to 3/4" Male NPT	6660	3-9/16"	2.000	.812	1.120	1 1/8" H	.50"

Malleable Clamps

Zinc Plated Iron

Use with 4000, 5000, 6000 Series Hose Nipples

Interlocking fingers for stronger connection

All components zinc plated

(Imported)



<u>General Specifications</u>			
Part Number	Clamp Size	Hose ID	Hose OD
C-903	1/2"	1/2"	15/16" - 1-1/16"
C-904	1/2" - 5/8"	1/2" - 5/8"	1 1/16" - 1-3/16"
C-905	3/4"	3/4"	1-3/16" - 1-5/16"
C-907	1"	1"	1-7/16" - 1-3/4"

Universal Hy-Way Quick Acting Hose And Pipe Couplings

Painted Ductile Iron

*Quick leak-free connection on large diameter hose and pipe
Join together with a push and one quarter turn
1 1/4" and 1 1/2" sizes mate interchangeably
Black painted finish
Natural rubber gasket
Male and female NPT ends available
(1) Safety clip included*



<u>General Specifications</u>		
Part Number	Description	Overall Length
125	1-1/4" Female Pipe Thread – 150 Casting	2 9/16"
150	1-1/2" Female Pipe Thread – 150 Casting	2 9/16"
200	2" Female Pipe Thread – 200 Casting	2 9/16"
125M	1-1/4" Male Pipe Thread – 150 Casting	3 3/4"
150M	1-1/2" Male Pipe Thread – 150 Casting	4"
200M	2" Male Pipe Thread – 200 Casting	4 1/4"

Replacement Gaskets	
1250	For 150 Castings
2000	For 200 Casting

TERMS AND CONDITIONS OF SALE POLICY

Acceptance. Vanamatic Company (“Seller”) agrees to sell materials, products, and/or any other item (“Goods”) to the customer (“Buyer”) based on the terms and conditions herein described. The pricing for the Goods are based on these terms and only applicable to these terms unless otherwise specified.

Title and Risk of Loss. Prices quoted are F.O.B. Seller’s facility unless otherwise agreed upon and specified in the Seller’s quotation. Title and risk of loss or damage to the Goods shall pass to the Buyer as soon as the finished Goods leave the control of the Seller. Seller shall have a security interest in the Goods until full payment has been made by the Buyer.

Prices and Taxes. Any local, state, U.S federal or foreign taxes or duties on the Goods shall be added to the price and paid by the buyer. Prices quoted are United States Dollars (“USD”). Currency other than USD must be agreed upon and terms specified in the Seller’s quotation. Prices are subject to change at any time without prior notice.

Payment Terms. Prices quoted require payment within thirty (30) days after the date of invoice, unless otherwise agreed upon and specified in the Seller’s quotation. Buyer may select and pay within the discount terms without affecting the quoted prices.

- **Terms: 1% 10 Calendar Days – Net 30 Calendar Days**
- **Prepayment for 6 months on all orders following a late payment**

Laws, Ordinances, and Regulations. Prices quoted cover normal laws, ordinances, and regulations as Seller may be accustomed to during the normal manufacture of products. Seller shall utilize reasonable efforts to cause the manufacture of goods to comply with its interpretation of applicable U.S. federal and state, safety, health, and environmental regulations. However, Seller shall not be responsible for any applicable laws, ordinances, codes, and/or regulations at any location where Goods are utilized by Buyer or Buyer’s customers, unless otherwise agreed upon and specified in the Seller’s quotation. The sale of Goods by Seller shall be governed by the laws of the State of Ohio.

Liability. Seller shall not be liable for any act, omission, result or consequence due to any act of God, casualty, labor dispute, shortage of material, loss of utilities, failure to deliver, and/or any other cause beyond Seller’s reasonable control. Seller does not provide warranties or accept financial liability beyond that described in this document, unless otherwise agreed upon and specified in the Seller’s quotation.

General Specifications: Distributors/Resellers and purchasers shall comply with Seller’s General Specification page of this document.

Quality Rejects. Seller warrants that Goods are in accordance with the provisions specified in this document. Seller agrees to inspect, repair, or replace, at Seller’s option, goods that fail to conform to provisions specified in this document. Seller shall not be responsible for freight charges in excess of those agreed upon and used in the normal transportation of the Goods to the Buyer. The Seller and Buyer may agree to inspection charges by the Buyer and/or a third party inspection firm without effect to the terms of this policy.

Warranty and Product Recall. Unless otherwise agreed upon and specified in the Seller’s quotation, prices quoted do not include liability for any costs over and above those detailed in the Quality Rejects section of this document. Buyer assumes liability for any and all warranty claims and product recall obligations relating to the Seller’s Goods.

Return and Restocking. Products purchased from Vanamatic Company, except special orders, may be returned within 30 days without being subject to a restocking fee. Original shipping and handling fees will not be refunded and return shipments must be prepaid. A Return Material Authorization Number (RMA) must be requested prior to any return. Returns after 30 days are subject to a 15% restocking fee. Special orders cannot be returned.

2018 Pricing Schedule

<u>Specifications</u> 1000 Series Description (Steel)	Min Qty	Coupling Nipples – (Steel)			
		Call Sales @ 419-692-6085 for Quantities Over 500			
		Part No.	Price/Each	100-249	250-500
1/8" Hose to 1/8" Hose	<i>Request</i>	1000	<i>Request</i>	<i>Request</i>	<i>Request</i>
1/4" Hose to 1/8" Hose	<i>Request</i>	1100	<i>Request</i>	<i>Request</i>	<i>Request</i>
1/4" Hose to 1/4" Hose	25	1110	\$4.49	\$3.90	\$3.63
5/16" Hose to 5/16" Hose	50	1220	\$2.43	\$2.11	\$1.97
3/8" Hose to 1/4" Hose	<i>Request</i>	1300	<i>Request</i>	<i>Request</i>	<i>Request</i>
3/8" Hose to 3/8" Hose	50	1330	\$2.55	\$2.21	\$2.06
1/2" Hose to 3/8" Hose	<i>Request</i>	1430	<i>Request</i>	<i>Request</i>	<i>Request</i>
1/2" Hose to 1/2" Hose	50	1440	\$2.65	\$2.31	\$2.15
5/8" Hose to 5/8" Hose	50	1550	\$3.32	\$2.89	\$2.68
3/4" Hose to 1/2" Hose	<i>Request</i>	1640	<i>Request</i>	<i>Request</i>	<i>Request</i>
3/4" Hose to 3/4" Hose	25	1660	\$3.62	\$3.15	\$2.93
1" Hose to 3/4" Hose	<i>Request</i>	1760	<i>Request</i>	<i>Request</i>	<i>Request</i>
1" Hose to 1" Hose	25	1770	\$4.35	\$3.79	\$3.51
1-1/4" Hose to 1-1/4" Hose	25	1880	\$5.76	\$5.01	\$4.65
1-1/2" Hose to 1-1/2" Hose	<i>Request</i>	1990	<i>Request</i>	<i>Request</i>	<i>Request</i>

2018 Pricing Schedule

<u>Specifications</u> 1000 Series Description (Aluminum)	Min Qty	Coupling Nipples – (Aluminum)			
		<i>Call Sales @ 419-692-6085 for Quantities Over 500</i>			
		Part No.	Price/Each	100-249	250-500
1/8" Hose to 1/8" Hose	<i>Request</i>	1001	<i>Request</i>	<i>Request</i>	<i>Request</i>
1/4" Hose to 1/8" Hose	<i>Request</i>	1101	<i>Request</i>	<i>Request</i>	<i>Request</i>
1/4" Hose to 1/4" Hose	25	1111	\$8.85	\$7.70	\$7.16
5/16" Hose to 5/16" Hose	25	1221	\$3.95	\$3.43	\$3.19
3/8" Hose to 1/4" Hose	<i>Request</i>	1301	<i>Request</i>	<i>Request</i>	<i>Request</i>
3/8" Hose to 3/8" Hose	50	1331	\$4.47	\$3.88	\$3.62
1/2" Hose to 3/8" Hose	<i>Request</i>	1431	<i>Request</i>	<i>Request</i>	<i>Request</i>
1/2" Hose to 1/2" Hose	50	1441	\$4.96	\$4.31	\$4.01
5/8" Hose to 5/8" Hose	50	1551	\$7.34	\$6.38	\$5.93
3/4" Hose to 1/2" Hose	<i>Request</i>	1641	<i>Request</i>	<i>Request</i>	<i>Request</i>
3/4" Hose to 3/4" Hose	25	1661	\$8.61	\$7.49	\$6.95
1" Hose to 3/4" Hose	<i>Request</i>	1761	<i>Request</i>	<i>Request</i>	<i>Request</i>
1" Hose to 1" Hose	25	1771	\$10.68	\$9.27	\$8.63
1-1/4" Hose to 1-1/4" Hose	20	1881	\$14.40	\$12.52	\$11.65
1-1/2" Hose to 1-1/2" Hose	<i>Request</i>	1991	<i>Request</i>	<i>Request</i>	<i>Request</i>

2018 Pricing Schedule

<u>Specifications</u> 1000 Series Description (304 Stainless)	Min Qty	Coupling Nipples – (304 Stainless Steel)			
		<i>Call Sales @ 419-692-6085 for Quantities Over 500</i>			
		Part No.	Price/Each	100-249	250-500
1/8" Hose to 1/8" Hose	<i>Request</i>	1004	<i>Request</i>	<i>Request</i>	<i>Request</i>
1/4" Hose to 1/8" Hose	<i>Request</i>	1104	<i>Request</i>	<i>Request</i>	<i>Request</i>
1/4" Hose to 1/4" Hose	25	1114	\$20.47	\$17.81	\$16.56
5/16" Hose to 5/16" Hose	25	1224	\$6.87	\$5.98	\$5.56
3/8" Hose to 1/4" Hose	<i>Request</i>	1304	<i>Request</i>	<i>Request</i>	<i>Request</i>
3/8" Hose to 3/8" Hose	50	1334	\$7.39	\$6.43	\$5.97
1/2" Hose to 3/8" Hose	<i>Request</i>	1434	<i>Request</i>	<i>Request</i>	<i>Request</i>
1/2" Hose to 1/2" Hose	50	1444	\$8.08	\$7.02	\$6.53
5/8" Hose to 5/8" Hose	50	1554	\$11.98	\$10.41	\$9.69
3/4" Hose to 1/2" Hose	<i>Request</i>	1644	<i>Request</i>	<i>Request</i>	<i>Request</i>
3/4" Hose to 3/4" Hose	25	1664	\$13.38	\$11.64	\$10.82
1" Hose to 3/4" Hose	<i>Request</i>	1764	<i>Request</i>	<i>Request</i>	<i>Request</i>
1" Hose to 1" Hose	25	1774	\$16.68	\$14.50	\$13.48
1-1/4" Hose to 1-1/4" Hose	20	1884	\$22.44	\$19.51	\$18.15
1-1/2" Hose to 1-1/2" Hose	<i>Request</i>	1994	<i>Request</i>	<i>Request</i>	<i>Request</i>

2018 Pricing Schedule

<u>Specifications</u> 1000 Series Description (316 Stainless)	Min Qty	Coupling Nipples – (316 Stainless Steel)			
		<i>Call Sales @ 419-692-6085 for Quantities Over 500</i>			
		Part No.	Price/Each	100-249	250-500
1/8" Hose to 1/8" Hose	<i>Request</i>	1006	<i>Request</i>	<i>Request</i>	<i>Request</i>
1/4" Hose to 1/8" Hose	<i>Request</i>	1106	<i>Request</i>	<i>Request</i>	<i>Request</i>
1/4" Hose to 1/4" Hose	25	1116	<i>Request</i>	<i>Request</i>	<i>Request</i>
5/16" Hose to 5/16" Hose	25	1226	<i>Request</i>	<i>Request</i>	<i>Request</i>
3/8" Hose to 1/4" Hose	<i>Request</i>	1306	<i>Request</i>	<i>Request</i>	<i>Request</i>
3/8" Hose to 3/8" Hose	50	1336	<i>Request</i>	<i>Request</i>	<i>Request</i>
1/2" Hose to 3/8" Hose	<i>Request</i>	1436	<i>Request</i>	<i>Request</i>	<i>Request</i>
1/2" Hose to 1/2" Hose	50	1446	<i>Request</i>	<i>Request</i>	<i>Request</i>
5/8" Hose to 5/8" Hose	50	1556	<i>Request</i>	<i>Request</i>	<i>Request</i>
3/4" Hose to 1/2" Hose	<i>Request</i>	1646	<i>Request</i>	<i>Request</i>	<i>Request</i>
3/4" Hose to 3/4" Hose	25	1666	<i>Request</i>	<i>Request</i>	<i>Request</i>
1" Hose to 3/4" Hose	<i>Request</i>	1766	<i>Request</i>	<i>Request</i>	<i>Request</i>
1" Hose to 1" Hose	25	1776	<i>Request</i>	<i>Request</i>	<i>Request</i>
1-1/4" Hose to 1-1/4" Hose	20	1886	<i>Request</i>	<i>Request</i>	<i>Request</i>
1-1/2" Hose to 1-1/2" Hose	<i>Request</i>	1996	<i>Request</i>	<i>Request</i>	<i>Request</i>

2018 Pricing Schedule

<u>Specifications</u> 2000 Series Description (Steel)	Min Qty	Standard Barbed Male Pipe – (Steel)			
		Call Sales @ 419-692-6085 for Quantities Over 500			
		Part No.	Price/Each	100-249	250-500
1/8" Hose to 1/8" NPT	Request	2020	Request	Request	Request
1/8" Hose to 1/4" NPT	Request	2020	Request	Request	Request
1/4" hose to 1/8" NPT	50	2120	\$2.40	\$2.09	\$1.94
1/4" hose to 1/4" NPT	50	2130	\$2.53	\$2.21	\$2.04
1/4" hose to 3/8" NPT	50	2140	\$2.63	\$2.29	\$2.12
1/4" hose to 1/2" NPT	50	2150	Request	Request	Request
5/16" hose to 1/4" NPT	50	2230	\$2.53	\$2.21	\$2.04
5/16" hose to 3/8" NPT	50	2240	Request	Request	Request
5/16" hose to 1/2" NPT	50	2250	Request	Request	Request
3/8" hose to 1/8" NPT	50	2320	\$2.43	\$2.11	\$1.96
3/8" hose to 1/4" NPT	50	2330	\$2.53	\$2.21	\$2.04
3/8" hose to 3/8" NPT	50	2340	\$2.63	\$2.29	\$2.12
3/8" hose to 1/2" NPT	50	2350	\$2.78	\$2.42	\$2.25
1/2" hose to 1/4" NPT	50	2430	\$2.53	\$2.21	\$2.04
1/2" hose to 3/8" NPT	50	2440	\$2.63	\$2.29	\$2.12
1/2" hose to 1/2" NPT	50	2450	\$2.83	\$2.46	\$2.29
1/2" hose to 3/4" NPT	25	2460	\$3.36	\$2.92	\$2.72
5/8" hose to 1/2" NPT	25	2550	Request	Request	Request
5/8" hose to 3/4" NPT	25	2560	Request	Request	Request
3/4" hose to 1/2" NPT	25	2650	\$3.19	\$2.77	\$2.58
3/4" hose to 3/4" NPT	25	2660	\$3.80	\$3.30	\$3.07
3/4" hose to 1" NPT	25	2670	\$4.99	\$4.35	\$4.04
1" hose to 3/4" NPT	25	2760	\$3.80	\$3.30	\$3.07
1" hose to 1" NPT	25	2770	\$4.99	\$4.35	\$4.04
1-1/4" hose to 1" NPT	10	2870	Request	Request	Request
1-1/4" hose to 1-1/4" NPT	10	2880	Request	Request	Request
1-1/2" hose to 1-1/2" NPT	10	2990	Request	Request	Request

2018 Pricing Schedule

<u>Specifications</u> 2000 Series Description (Aluminum)	Min Qty	Standard Barbed Male Pipe – (Aluminum)			
		Call Sales @ 419-692-6085 for Quantities Over 500			
		Part No.	Price/Each	100-249	250-500
1/8" hose to 1/8" NPT	Request	2021	Request	Request	Request
1/8" hose to 1/8" NPT	Request	2031	Request	Request	Request
1/4" hose to 1/8" NPT	50	2121	\$3.15	\$2.75	\$2.55
1/4" hose to 1/4" NPT	50	2131	\$3.42	\$2.98	\$2.76
1/4" hose to 3/8" NPT	50	2141	\$3.78	\$3.29	\$3.06
1/4" hose to 1/2" NPT	25	2151	Request	Request	Request
5/16" hose to 1/4" NPT	50	2231	\$3.42	\$2.98	\$2.76
5/16" hose to 3/8" NPT	50	2241	Request	Request	Request
5/16" hose to 1/2" NPT	25	2251	Request	Request	Request
3/8" hose to 1/8" NPT	50	2321	\$3.20	\$2.78	\$2.58
3/8" hose to 1/4" NPT	50	2331	\$3.42	\$2.98	\$2.76
3/8" hose to 3/8" NPT	50	2341	\$3.78	\$3.29	\$3.06
3/8" hose to 1/2" NPT	25	2351	\$5.00	\$4.35	\$4.05
1/2" hose to 1/4" NPT	50	2431	\$3.42	\$2.98	\$2.76
1/2" hose to 3/8" NPT	50	2441	\$3.78	\$3.29	\$3.06
1/2" hose to 1/2" NPT	25	2451	\$5.06	\$4.40	\$4.09
1/2" hose to 3/4" NPT	20	2461	\$6.47	\$5.63	\$5.23
5/8" hose to 1/2" NPT	20	2551	Request	Request	Request
5/8" hose to 3/4" NPT	15	2561	Request	Request	Request
3/4" hose to 1/2" NPT	20	2651	\$5.75	\$5.00	\$4.65
3/4" hose to 3/4" NPT	15	2661	\$7.38	\$6.43	\$5.98
3/4" hose to 1" NPT	15	2671	\$10.20	\$8.88	\$8.24
1" hose to 3/4" NPT	15	2761	\$7.38	\$6.43	\$5.98
1" hose to 1" NPT	15	2771	\$10.20	\$8.88	\$8.24
1-1/4" hose to 1" NPT	15	2871	Request	Request	Request
1-1/4" hose to 1-1/4" NPT	5	2881	Request	Request	Request
1-1/2" hose to 1-1/2" NPT	5	2991	Request	Request	Request

2018 Pricing Schedule

<u>Specifications</u> 2000 Series Description (304 Stainless)	Min Qty	Standard Barbed Male Pipe – (304 Stainless)			
		Call Sales @ 419-692-6085 for Quantities Over 500			
		Part No.	Price/Each	50-149	150-500
1/8" hose to 1/8" NPT	Request	2024	Request	Request	Request
1/8" hose to 1/8" NPT	Request	2034	Request	Request	Request
1/4" hose to 1/8" NPT	20	2124	\$7.86	\$6.83	\$6.36
1/4" hose to 1/4" NPT	20	2134	\$8.50	\$7.39	\$6.88
1/4" hose to 3/8" NPT	20	2144	\$9.11	\$7.93	\$7.37
1/4" hose to 1/2" NPT	10	2154	Request	Request	Request
5/16" hose to 1/4" NPT	20	2234	\$7.38	\$6.41	\$5.96
5/16" hose to 3/8" NPT	20	2244	Request	Request	Request
5/16" hose to 1/2" NPT	10	2254	Request	Request	Request
3/8" hose to 1/8" NPT	20	2324	\$7.14	\$6.21	\$5.77
3/8" hose to 1/4" NPT	20	2334	\$7.38	\$6.41	\$5.96
3/8" hose to 3/8" NPT	20	2344	\$7.95	\$6.91	\$6.43
3/8" hose to 1/2" NPT	10	2354	\$13.67	\$11.89	\$11.05
1/2" hose to 1/4" NPT	20	2434	\$7.38	\$6.41	\$5.96
1/2" hose to 3/8" NPT	20	2444	\$7.95	\$6.91	\$6.43
1/2" hose to 1/2" NPT	10	2454	\$10.04	\$8.73	\$8.12
1/2" hose to 3/4" NPT	10	2464	\$13.80	\$11.99	\$11.16
5/8" hose to 1/2" NPT	10	2554	Request	Request	Request
5/8" hose to 3/4" NPT	10	2564	Request	Request	Request
3/4" hose to 1/2" NPT	10	2654	\$11.36	\$9.88	\$9.19
3/4" hose to 3/4" NPT	10	2664	\$14.16	\$12.31	\$11.45
3/4" hose to 1" NPT	5	2674	\$21.08	\$18.33	\$17.05
1" hose to 3/4" NPT	10	2764	\$13.90	\$12.08	\$11.24
1" hose to 1" NPT	5	2774	\$18.97	\$16.50	\$15.35
1-1/4" hose to 1" NPT	5	2874	Request	Request	Request
1-1/4" hose to 1-1/4" NPT	2	2884	Request	Request	Request
1-1/2" hose to 1-1/2" NPT	2	2994	Request	Request	Request

2018 Pricing Schedule

<u>Specifications</u> 2000 Series Description (316 Stainless)	Min Qty	Standard Barbed Male Pipe – (316 Stainless)			
		<i>Call Sales @ 419-692-6085 for Quantities Over 500</i>			
		Part No.	Price/Each	50-149	150-500
1/8" hose to 1/8" NPT	<i>Request</i>	2026	<i>Request</i>	<i>Request</i>	<i>Request</i>
1/8" hose to 1/4" NPT	<i>Request</i>	2036	<i>Request</i>	<i>Request</i>	<i>Request</i>
1/4" hose to 1/8" NPT	15	2126	<i>Request</i>	<i>Request</i>	<i>Request</i>
1/4" hose to 1/4" NPT	15	2136	<i>Request</i>	<i>Request</i>	<i>Request</i>
1/4" hose to 3/8" NPT	15	2146	<i>Request</i>	<i>Request</i>	<i>Request</i>
1/4" hose to 1/2" NPT	10	2156	<i>Request</i>	<i>Request</i>	<i>Request</i>
5/16" hose to 1/4" NPT	15	2236	<i>Request</i>	<i>Request</i>	<i>Request</i>
5/16" hose to 3/8" NPT	10	2246	<i>Request</i>	<i>Request</i>	<i>Request</i>
5/16" hose to 1/2" NPT	10	2256	<i>Request</i>	<i>Request</i>	<i>Request</i>
3/8" hose to 1/8" NPT	15	2326	<i>Request</i>	<i>Request</i>	<i>Request</i>
3/8" hose to 1/4" NPT	15	2336	<i>Request</i>	<i>Request</i>	<i>Request</i>
3/8" hose to 3/8" NPT	10	2346	<i>Request</i>	<i>Request</i>	<i>Request</i>
3/8" hose to 1/2" NPT	10	2356	<i>Request</i>	<i>Request</i>	<i>Request</i>
1/2" hose to 1/4" NPT	15	2436	<i>Request</i>	<i>Request</i>	<i>Request</i>
1/2" hose to 3/8" NPT	10	2446	<i>Request</i>	<i>Request</i>	<i>Request</i>
1/2" hose to 1/2" NPT	10	2456	<i>Request</i>	<i>Request</i>	<i>Request</i>
1/2" hose to 3/4" NPT	10	2466	<i>Request</i>	<i>Request</i>	<i>Request</i>
5/8" hose to 1/2" NPT	10	2556	<i>Request</i>	<i>Request</i>	<i>Request</i>
5/8" hose to 3/4" NPT	5	2566	<i>Request</i>	<i>Request</i>	<i>Request</i>
3/4" hose to 1/2" NPT	10	2656	<i>Request</i>	<i>Request</i>	<i>Request</i>
3/4" hose to 3/4" NPT	5	2666	<i>Request</i>	<i>Request</i>	<i>Request</i>
3/4" hose to 1" NPT	5	2676	<i>Request</i>	<i>Request</i>	<i>Request</i>
1" hose to 3/4" NPT	5	2766	<i>Request</i>	<i>Request</i>	<i>Request</i>
1" hose to 1" NPT	5	2776	<i>Request</i>	<i>Request</i>	<i>Request</i>
1-1/4" hose to 1" NPT	5	2876	<i>Request</i>	<i>Request</i>	<i>Request</i>
1-1/4" hose to 1-1/4" NPT	2	2886	<i>Request</i>	<i>Request</i>	<i>Request</i>
1-1/2" hose to 1-1/2" NPT	2	2996	<i>Request</i>	<i>Request</i>	<i>Request</i>

2018 Pricing Schedule

<u>Specifications</u> 4000 Series Description (Steel)	Min Qty	Thick Wall Barbed Male Pipe – (Steel)			
		Call Sales @ 419-692-6085 for Quantities Over 500			
		Part No.	Price/Each	100-249	250-500
1/8" hose to 1/8" NPT	Request	4020	Request	Request	Request
1/8" hose to 1/4" NPT	Request	4030	Request	Request	Request
1/4" hose to 1/8" NPT	50	4120	\$2.59	\$2.25	\$2.09
1/4" hose to 1/4" NPT	50	4130	\$2.43	\$2.11	\$1.97
1/4" hose to 3/8" NPT	50	4140	\$2.57	\$2.23	\$2.08
1/4" hose to 1/2" NPT	Request	4150	Request	Request	Request
5/16" hose to 1/4" NPT	50	4230	\$2.68	\$2.33	\$2.17
5/16" hose to 3/8" NPT	50	4240	Request	Request	Request
5/16" hose to 1/2" NPT	50	4250	Request	Request	Request
3/8" hose to 1/8" NPT	50	4320	\$2.66	\$2.31	\$2.15
3/8" hose to 1/4" NPT	50	4330	\$2.80	\$2.42	\$2.26
3/8" hose to 3/8" NPT	50	4340	\$2.80	\$2.42	\$2.26
3/8" hose to 1/2" NPT	50	4350	\$3.39	\$2.94	\$2.73
1/2" hose to 1/4" NPT	50	4430	\$3.33	\$2.89	\$2.69
1/2" hose to 3/8" NPT	50	4440	\$3.33	\$2.89	\$2.69
1/2" hose to 1/2" NPT	50	4450	\$3.53	\$3.08	\$2.86
1/2" hose to 3/4" NPT	25	4460	\$4.22	\$3.67	\$3.41
5/8" hose to 1/2" NPT	25	4550	Request	Request	Request
5/8" hose to 3/4" NPT	25	4560	Request	Request	Request
3/4" hose to 1/2" NPT	25	4650	\$4.69	\$4.07	\$3.79
3/4" hose to 3/4" NPT	25	4660	\$4.69	\$4.07	\$3.79
3/4" hose to 1" NPT	25	4670	\$6.13	\$5.33	\$4.95
1" hose to 3/4" NPT	25	4760	\$5.78	\$5.03	\$4.67
1" hose to 1" NPT	25	4770	\$6.13	\$5.33	\$4.95
1-1/4" hose to 1" NPT	Request	4870	Request	Request	Request
1-1/4" hose to 1-1/4" NPT	Request	4880	Request	Request	Request
1-1/2" hose to 1-1/2" NPT	Request	4990	Request	Request	Request

2018 Pricing Schedule

<u>Specifications</u> 4000 Series Description (Aluminum)	Min Qty	Thick Wall Barbed Male Pipe – (Aluminum)			
		Call Sales @ 419-692-6085 for Quantities Over 500			
		Part No.	Price/Each	100-249	250-500
1/8" hose to 1/8" NPT	Request	4021	Request	Request	Request
1/8" hose to 1/4" NPT	Request	4031	Request	Request	Request
1/4" hose to 1/8" NPT	25	4121	\$4.14	\$3.60	\$3.35
1/4" hose to 1/4" NPT	25	4131	\$4.61	\$4.01	\$3.72
1/4" hose to 3/8" NPT	25	4141	\$5.04	\$4.39	\$4.08
1/4" hose to 1/2" NPT	Request	4151	Request	Request	Request
5/16" hose to 1/4" NPT	25	4231	\$4.55	\$3.96	\$3.68
5/16" hose to 3/8" NPT	25	4241	Request	Request	Request
5/16" hose to 1/2" NPT	25	4251	Request	Request	Request
3/8" hose to 1/8" NPT	25	4321	\$5.33	\$4.63	\$4.32
3/8" hose to 1/4" NPT	25	4331	\$5.63	\$4.89	\$4.55
3/8" hose to 3/8" NPT	25	4341	\$5.63	\$4.89	\$4.55
3/8" hose to 1/2" NPT	25	4351	\$7.40	\$6.44	\$5.98
1/2" hose to 1/4" NPT	25	4431	\$7.29	\$6.35	\$5.90
1/2" hose to 3/8" NPT	25	4441	\$7.29	\$6.35	\$5.90
1/2" hose to 1/2" NPT	25	4451	\$7.75	\$6.74	\$6.27
1/2" hose to 3/4" NPT	15	4461	\$9.73	\$8.45	\$7.86
5/8" hose to 1/2" NPT	15	4551	Request	Request	Request
5/8" hose to 3/4" NPT	15	4561	Request	Request	Request
3/4" hose to 1/2" NPT	15	4651	\$10.76	\$9.35	\$8.70
3/4" hose to 3/4" NPT	15	4661	\$10.78	\$9.37	\$8.71
3/4" hose to 1" NPT	10	4671	\$14.84	\$12.91	\$12.00
1" hose to 3/4" NPT	10	4761	\$13.90	\$12.10	\$11.25
1" hose to 1" NPT	10	4771	\$14.84	\$12.91	\$12.00
1-1/4" hose to 1" NPT	Request	4871	Request	Request	Request
1-1/4" hose to 1-1/4" NPT	Request	4881	Request	Request	Request
1-1/2" hose to 1-1/2" NPT	Request	4991	Request	Request	Request

2018 Pricing Schedule

<u>Specifications</u> 4000 Series Description (304 Stainless)	Min Qty	Thick Wall Barbed Male Pipe – (304 Stainless)			
		Call Sales @ 419-692-6085 for Quantities Over 500			
		Part No.	Price/Each	50-149	150-500
1/8" hose to 1/8" NPT	Request	4024	Request	Request	Request
1/8" hose to 1/4" NPT	Request	4034	Request	Request	Request
1/4" hose to 1/8" NPT	15	4124	\$8.97	\$7.79	\$7.25
1/4" hose to 1/4" NPT	15	4134	\$9.27	\$8.07	\$7.52
1/4" hose to 3/8" NPT	15	4144	\$10.14	\$8.81	\$8.20
1/4" hose to 3/8" NPT	Request	4154	Request	Request	Request
5/16" hose to 1/4" NPT	15	4234	\$9.72	\$8.45	\$7.86
5/16" hose to 3/8" NPT	10	4244	Request	Request	Request
5/16" hose to 1/2" NPT	10	4254	Request	Request	Request
3/8" hose to 1/8" NPT	10	4324	\$10.47	\$9.11	\$8.46
3/8" hose to 1/4" NPT	10	4334	\$11.04	\$9.60	\$8.93
3/8" hose to 3/8" NPT	10	4344	\$10.98	\$9.55	\$8.88
3/8" hose to 1/2" NPT	10	4354	\$13.65	\$11.86	\$11.04
1/2" hose to 1/4" NPT	10	4434	\$11.97	\$10.41	\$9.68
1/2" hose to 3/8" NPT	10	4444	\$11.97	\$10.41	\$9.68
1/2" hose to 1/2" NPT	10	4454	\$12.68	\$11.02	\$10.25
1/2" hose to 3/4" NPT	10	4464	\$17.59	\$15.30	\$14.23
5/8" hose to 1/2" NPT	10	4554	Request	Request	Request
5/8" hose to 3/4" NPT	10	4564	Request	Request	Request
3/4" hose to 1/2" NPT	10	4654	\$17.71	\$15.41	\$14.33
3/4" hose to 3/4" NPT	10	4664	\$17.71	\$15.41	\$14.33
3/4" hose to 1" NPT	5	4674	\$26.07	\$22.67	\$21.08
1" hose to 3/4" NPT	5	4764	\$22.53	\$19.59	\$18.22
1" hose to 1" NPT	5	4774	\$23.72	\$20.62	\$19.18
1-1/4" hose to 1" NPT	Request	4874	Request	Request	Request
1-1/4" hose to 1-1/4" NPT	Request	4884	Request	Request	Request
1-1/2" hose to 1-1/2" NPT	Request	4994	Request	Request	Request

2018 Pricing Schedule

<u>Specifications</u> 4000 Series Description (316 Stainless)	Min Qty	Thick Wall Barbed Male Pipe – (316 Stainless)			
		<i>Call Sales @ 419-692-6085 for Quantities Over 500</i>			
		Part No.	Price/Each	50-149	150-500
1/8" hose to 1/8" NPT	<i>Request</i>	4026	<i>Request</i>	<i>Request</i>	<i>Request</i>
1/8" hose to 1/4" NPT	<i>Request</i>	4036	<i>Request</i>	<i>Request</i>	<i>Request</i>
1/4" hose to 1/8" NPT	10	4126	<i>Request</i>	<i>Request</i>	<i>Request</i>
1/4" hose to 1/4" NPT	10	4136	<i>Request</i>	<i>Request</i>	<i>Request</i>
1/4" hose to 3/8" NPT	10	4146	<i>Request</i>	<i>Request</i>	<i>Request</i>
1/4" hose to 1/2" NPT	<i>Request</i>	4156	<i>Request</i>	<i>Request</i>	<i>Request</i>
5/16" hose to 1/4" NPT	10	4236	<i>Request</i>	<i>Request</i>	<i>Request</i>
5/16" hose to 3/8" NPT	10	4246	<i>Request</i>	<i>Request</i>	<i>Request</i>
5/16" hose to 1/2" NPT	10	4256	<i>Request</i>	<i>Request</i>	<i>Request</i>
3/8" hose to 1/8" NPT	10	4326	<i>Request</i>	<i>Request</i>	<i>Request</i>
3/8" hose to 1/4" NPT	10	4336	<i>Request</i>	<i>Request</i>	<i>Request</i>
3/8" hose to 3/8" NPT	10	4346	<i>Request</i>	<i>Request</i>	<i>Request</i>
3/8" hose to 1/2" NPT	10	4356	<i>Request</i>	<i>Request</i>	<i>Request</i>
1/2" hose to 1/4" NPT	10	4436	<i>Request</i>	<i>Request</i>	<i>Request</i>
1/2" hose to 3/8" NPT	10	4446	<i>Request</i>	<i>Request</i>	<i>Request</i>
1/2" hose to 1/2" NPT	10	4456	<i>Request</i>	<i>Request</i>	<i>Request</i>
1/2" hose to 3/4" NPT	5	4466	<i>Request</i>	<i>Request</i>	<i>Request</i>
5/8" hose to 1/2" NPT	5	4556	<i>Request</i>	<i>Request</i>	<i>Request</i>
5/8" hose to 3/4" NPT	5	4566	<i>Request</i>	<i>Request</i>	<i>Request</i>
3/4" hose to 1/2" NPT	5	4656	<i>Request</i>	<i>Request</i>	<i>Request</i>
3/4" hose to 3/4" NPT	5	4666	<i>Request</i>	<i>Request</i>	<i>Request</i>
3/4" hose to 1" NPT	5	4676	<i>Request</i>	<i>Request</i>	<i>Request</i>
1" hose to 3/4" NPT	5	4766	<i>Request</i>	<i>Request</i>	<i>Request</i>
1" hose to 1" NPT	5	4776	<i>Request</i>	<i>Request</i>	<i>Request</i>
1-1/4" hose to 1" NPT	<i>Request</i>	4876	<i>Request</i>	<i>Request</i>	<i>Request</i>
1-1/4" hose to 1-1/4" NPT	<i>Request</i>	4886	<i>Request</i>	<i>Request</i>	<i>Request</i>
1-1/2" hose to 1-1/2" NPT	<i>Request</i>	4996	<i>Request</i>	<i>Request</i>	<i>Request</i>

2018 Pricing Schedule

<u>Specifications</u> 5000 Series Description (Steel)	Min Qty	Thick Wall Barbed Female Pipe – (Steel)			
		<i>Call Sales @ 419-692-6085 for Quantities Over 500</i>			
		Part No.	Price/Each	100-249	250-500
1/8" hose to 1/8" NPT	Request	5020	Request	Request	Request
1/8" hose to 1/4" NPT	Request	5030	Request	Request	Request
1/4" hose to 1/8" NPT	50	5120	\$3.06	\$2.66	\$2.48
1/4" hose to 1/4" NPT	50	5130	\$3.21	\$2.79	\$2.59
1/4" hose to 3/8" NPT	Request	5140	Request	Request	Request
1/4" hose to 3/8" NPT	Request	5150	Request	Request	Request
5/16" hose to 1/4" NPT	Request	5230	Request	Request	Request
5/16" hose to 3/8" NPT	Request	5240	Request	Request	Request
5/16" hose to 1/2" NPT	Request	5250	Request	Request	Request
3/8" hose to 1/8" NPT	Request	5320	Request	Request	Request
3/8" hose to 1/4" NPT	50	5330	\$3.43	\$2.98	\$2.77
3/8" hose to 3/8" NPT	25	5340	\$3.76	\$3.27	\$3.04
3/8" hose to 1/2" NPT	25	5350	\$4.67	\$4.06	\$3.78
1/2" hose to 1/4" NPT	Request	5430	Request	Request	Request
1/2" hose to 3/8" NPT	25	5440	\$3.90	\$3.38	\$3.15
1/2" hose to 1/2" NPT	25	5450	\$4.85	\$4.22	\$3.93
1/2" hose to 3/4" NPT	Request	5460	Request	Request	Request
5/8" hose to 1/2" NPT	Request	5550	Request	Request	Request
5/8" hose to 3/4" NPT	Request	5560	Request	Request	Request
3/4" hose to 1/2" NPT	25	5650	\$5.34	\$4.63	\$4.31
3/4" hose to 3/4" NPT	25	5660	\$6.66	\$5.79	\$5.39
3/4" hose to 1" NPT	Request	5670	Request	Request	Request
1" hose to 3/4" NPT	Request	5760	Request	Request	Request
1" hose to 1" NPT	Request	5770	Request	Request	Request
1-1/4" hose to 1" NPT	Request	5870	Request	Request	Request
1-1/4" hose to 1-1/4" NPT	Request	5880	Request	Request	Request
1-1/2" hose to 1-1/2" NPT	Request	5990	Request	Request	Request

2018 Pricing Schedule

<u>Specifications</u> 5000 Series Description (Aluminum)	Min Qty	Thick Wall Barbed Female Pipe – (Aluminum)			
		Call Sales @ 419-692-6085 for Quantities Over 500			
		Part No.	Price/Each	100-249	250-500
1/8" hose to 1/8" NPT	Request	5021	Request	Request	Request
1/8" hose to 1/4" NPT	Request	5031	Request	Request	Request
1/4" hose to 1/8" NPT	20	5121	\$5.39	\$4.68	\$4.36
1/4" hose to 1/4" NPT	20	5131	\$5.82	\$5.06	\$4.70
1/4" hose to 3/8" NPT	Request	5141	Request	Request	Request
1/4" hose to 1/2" NPT	Request	5151	Request	Request	Request
5/16" hose to 1/4" NPT	Request	5231	Request	Request	Request
5/16" hose to 3/8" NPT	Request	5241	Request	Request	Request
5/16" hose to 1/2" NPT	Request	5251	Request	Request	Request
3/8" hose to 1/8" NPT	Request	5321	Request	Request	Request
3/8" hose to 1/4" NPT	20	5331	\$6.43	\$5.59	\$5.20
3/8" hose to 3/8" NPT	20	5341	\$7.64	\$6.64	\$6.17
3/8" hose to 1/2" NPT	15	5351	\$9.95	\$8.64	\$8.04
1/2" hose to 1/4" NPT	Request	5431	Request	Request	Request
1/2" hose to 3/8" NPT	20	5441	\$8.00	\$6.96	\$6.48
1/2" hose to 1/2" NPT	15	5451	\$10.39	\$9.03	\$8.40
1/2" hose to 3/4" NPT	Request	5461	Request	Request	Request
5/8" hose to 1/2" NPT	Request	5551	Request	Request	Request
5/8" hose to 3/4" NPT	Request	5561	Request	Request	Request
3/4" hose to 1/2" NPT	10	5651	\$11.52	\$10.02	\$9.31
3/4" hose to 3/4" NPT	10	5661	\$15.06	\$13.09	\$12.17
3/4" hose to 1" NPT	Request	5671	Request	Request	Request
1" hose to 3/4" NPT	Request	5761	Request	Request	Request
1" hose to 1" NPT	Request	5771	Request	Request	Request
1-1/4" hose to 1" NPT	Request	5871	Request	Request	Request
1-1/4" hose to 1-1/4" NPT	Request	5881	Request	Request	Request
1-1/2" hose to 1-1/2" NPT	Request	5991	Request	Request	Request

2018 Pricing Schedule

<u>Specifications</u> 5000 Series Description (304 Stainless)	Min Qty	Thick Wall Barbed Female Pipe – (304 Stainless)			
		Call Sales @ 419-692-6085 for Quantities Over 500			
		Part No.	Price/Each	100-249	250-500
1/8" hose to 1/8" NPT	Request	5024	Request	Request	Request
1/8" hose to 1/4" NPT	Request	5034	Request	Request	Request
1/4" hose to 1/8" NPT	15	5124	\$11.80	\$10.26	\$9.54
1/4" hose to 1/4" NPT	15	5134	\$12.51	\$10.88	\$10.12
1/4" hose to 3/8" NPT	Request	5144	Request	Request	Request
1/4" hose to 1/2" NPT	Request	5154	Request	Request	Request
5/16" hose to 1/4" NPT	Request	5234	Request	Request	Request
5/16" hose to 3/8" NPT	Request	5244	Request	Request	Request
5/16" hose to 1/2" NPT	Request	5254	Request	Request	Request
3/8" hose to 1/8" NPT	Request	5324	Request	Request	Request
3/8" hose to 1/4" NPT	15	5334	\$13.41	\$11.67	\$10.85
3/8" hose to 3/8" NPT	10	5344	\$15.18	\$13.20	\$12.28
3/8" hose to 1/2" NPT	10	5354	\$19.20	\$16.70	\$15.53
1/2" hose to 1/4" NPT	Request	5434	Request	Request	Request
1/2" hose to 3/8" NPT	10	5444	\$14.07	\$12.23	\$11.37
1/2" hose to 1/2" NPT	10	5454	\$20.00	\$17.39	\$16.18
1/2" hose to 3/4" NPT	Request	5464	Request	Request	Request
5/8" hose to 1/2" NPT	Request	5554	Request	Request	Request
5/8" hose to 3/4" NPT	Request	5564	Request	Request	Request
3/4" hose to 1/2" NPT	5	5654	\$19.80	\$17.22	\$16.01
3/4" hose to 3/4" NPT	5	5664	\$28.40	\$24.69	\$22.96
3/4" hose to 1" NPT	Request	5674	Request	Request	Request
1" hose to 3/4" NPT	Request	5764	Request	Request	Request
1" hose to 1" NPT	Request	5774	Request	Request	Request
1-1/4" hose to 1" NPT	Request	5874	Request	Request	Request
1-1/4" hose to 1-1/4" NPT	Request	5884	Request	Request	Request
1-1/2" hose to 1-1/2" NPT	Request	5994	Request	Request	Request

2018 Pricing Schedule

<u>Specifications</u> 5000 Series Description (Aluminum)	Min Qty	Thick Wall Barbed Female Pipe – (316 Stainless)			
		<i>Call Sales @ 419-692-6085 for Quantities Over 500</i>			
		Part No.	Price/Each	100-249	250-500
1/8" hose to 1/8" NPT	<i>Request</i>	5026	<i>Request</i>	<i>Request</i>	<i>Request</i>
1/8" hose to 1/4" NPT	<i>Request</i>	5036	<i>Request</i>	<i>Request</i>	<i>Request</i>
1/4" hose to 1/8" NPT	<i>Request</i>	5126	<i>Request</i>	<i>Request</i>	<i>Request</i>
1/4" hose to 1/4" NPT	<i>Request</i>	5136	<i>Request</i>	<i>Request</i>	<i>Request</i>
1/4" hose to 3/8" NPT	<i>Request</i>	5146	<i>Request</i>	<i>Request</i>	<i>Request</i>
1/4" hose to 1/2" NPT	<i>Request</i>	5156	<i>Request</i>	<i>Request</i>	<i>Request</i>
5/16" hose to 1/4" NPT	<i>Request</i>	5236	<i>Request</i>	<i>Request</i>	<i>Request</i>
5/16" hose to 3/8" NPT	<i>Request</i>	5246	<i>Request</i>	<i>Request</i>	<i>Request</i>
5/16" hose to 1/2" NPT	<i>Request</i>	5256	<i>Request</i>	<i>Request</i>	<i>Request</i>
3/8" hose to 1/8" NPT	<i>Request</i>	5326	<i>Request</i>	<i>Request</i>	<i>Request</i>
3/8" hose to 1/4" NPT	<i>Request</i>	5336	<i>Request</i>	<i>Request</i>	<i>Request</i>
3/8" hose to 3/8" NPT	<i>Request</i>	5346	<i>Request</i>	<i>Request</i>	<i>Request</i>
3/8" hose to 1/2" NPT	<i>Request</i>	5356	<i>Request</i>	<i>Request</i>	<i>Request</i>
1/2" hose to 1/4" NPT	<i>Request</i>	5436	<i>Request</i>	<i>Request</i>	<i>Request</i>
1/2" hose to 3/8" NPT	<i>Request</i>	5446	<i>Request</i>	<i>Request</i>	<i>Request</i>
1/2" hose to 1/2" NPT	<i>Request</i>	5456	<i>Request</i>	<i>Request</i>	<i>Request</i>
1/2" hose to 3/4" NPT	<i>Request</i>	5466	<i>Request</i>	<i>Request</i>	<i>Request</i>
5/8" hose to 1/2" NPT	<i>Request</i>	5556	<i>Request</i>	<i>Request</i>	<i>Request</i>
5/8" hose to 3/4" NPT	<i>Request</i>	5566	<i>Request</i>	<i>Request</i>	<i>Request</i>
3/4" hose to 1/2" NPT	<i>Request</i>	5656	<i>Request</i>	<i>Request</i>	<i>Request</i>
3/4" hose to 3/4" NPT	<i>Request</i>	5666	<i>Request</i>	<i>Request</i>	<i>Request</i>
3/4" hose to 1" NPT	<i>Request</i>	5676	<i>Request</i>	<i>Request</i>	<i>Request</i>
1" hose to 3/4" NPT	<i>Request</i>	5766	<i>Request</i>	<i>Request</i>	<i>Request</i>
1" hose to 1" NPT	<i>Request</i>	5776	<i>Request</i>	<i>Request</i>	<i>Request</i>
1-1/4" hose to 1" NPT	<i>Request</i>	5876	<i>Request</i>	<i>Request</i>	<i>Request</i>
1-1/4" hose to 1-1/4" NPT	<i>Request</i>	5886	<i>Request</i>	<i>Request</i>	<i>Request</i>
1-1/2" hose to 1-1/2" NPT	<i>Request</i>	5996	<i>Request</i>	<i>Request</i>	<i>Request</i>

2018 Pricing Schedule

<u>Specifications</u> 5000 Series Description (Aluminum)	Min Qty	Thick Wall Barbed Male Pipe – (Heat Treated Steel)			
		<i>Call Sales @ 419-692-6085 for Quantities Over 500</i>			
		Part No.	Price/Each	100-249	250-500
1/8" hose to 1/8" NPT	Request	6020	Request	Request	Request
1/8" hose to 1/4" NPT	Request	6030	Request	Request	Request
1/4" hose to 1/8" NPT	Request	6120	Request	Request	Request
1/4" hose to 1/4" NPT	Request	6130	Request	Request	Request
1/4" hose to 3/8" NPT	Request	6140	Request	Request	Request
1/4" hose to 1/2" NPT	Request	6150	Request	Request	Request
5/16" hose to 1/4" NPT	Request	6230	Request	Request	Request
5/16" hose to 3/8" NPT	Request	6240	Request	Request	Request
5/16" hose to 1/2" NPT	Request	6250	Request	Request	Request
3/8" hose to 1/8" NPT	Request	6320	Request	Request	Request
3/8" hose to 1/4" NPT	50	6330	\$3.68	\$3.20	\$2.98
3/8" hose to 3/8" NPT	Request	6340	Request	Request	Request
3/8" hose to 1/2" NPT	50	6350	\$4.24	\$3.68	\$3.42
1/2" hose to 1/4" NPT	Request	6430	Request	Request	Request
1/2" hose to 3/8" NPT	Request	6440	Request	Request	Request
1/2" hose to 1/2" NPT	50	6450	\$4.48	\$3.90	\$3.63
1/2" hose to 3/4" NPT	Request	6460	Request	Request	Request
5/8" hose to 1/2" NPT	Request	6550	Request	Request	Request
5/8" hose to 3/4" NPT	Request	6560	Request	Request	Request
3/4" hose to 1/2" NPT	Request	6650	Request	Request	Request
3/4" hose to 3/4" NPT	Request	6660	Request	Request	Request
3/4" hose to 1" NPT	Request	6670	Request	Request	Request
1" hose to 3/4" NPT	Request	6760	Request	Request	Request
1" hose to 1" NPT	Request	6770	Request	Request	Request
1-1/4" hose to 1" NPT	Request	6870	Request	Request	Request
1-1/4" hose to 1-1/4" NPT	Request	6880	Request	Request	Request
1-1/2" hose to 1-1/2" NPT	Request	6990	Request	Request	Request

2018 Pricing Schedule

Malleable Clamps – Discontinued When Stock Is Gone

Priced to sell

<u>Specifications</u>	Hose ID	Hose OD	Min Qty	Price Each
Part Number				
C-903	1/2"	15/16" - 1-1/16"	25	\$2.25
C-904	1/2" - 5/8"	1 1/16" - 1-3/16"	25	\$2.50
C-905	3/4"	1-3/16" - 1-5/16"	25	\$2.75
C-907	1"	1-7/16" - 1-3/4"	25	\$3.00

Universal Hy-Way Quick Acting Hose And Pipe Couplings

<u>Specifications</u>	Description	Min Qty	Price Each
Part Number			
125M	1-1/4" Male Pipe Thread – 150 Casting	5	\$35.25
150M	1-1/2" Male Pipe Thread – 150 Casting	5	\$35.25
200M	2" Male Pipe Thread – 200 Casting	5	\$42.50
125	1-1/4" Female Pipe Thread – 150 Casting	5	\$31.00
150	1-1/2" Female Pipe Thread – 150 Casting	5	\$31.00
200	2" Female Pipe Thread – 200 Casting	5	\$38.50
1250	Replacement Gasket	10	\$13.50
2000	Replacement Gasket	10	\$13.50